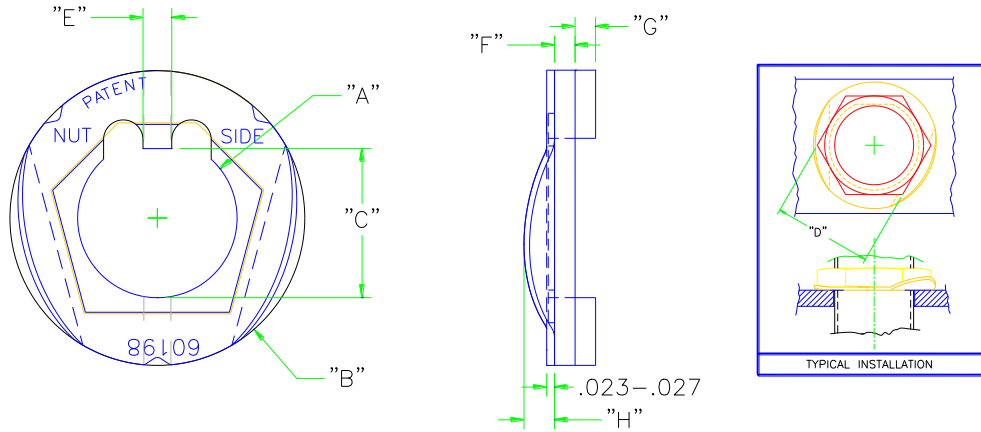


ROD END LOCKING DEVICE

SIMILAR TO NASM 14198: USE NAS 1423 NUTS



MATERIAL: STAINLESS STEEL 17-7 Condition C
Rockwell Hardness Rc 43 min.

CATALOG NUMBER	JSF NUMBER	DASH NO.	"A" +/- .005	"B" +/- .01	"C" +/- .005	"D" NUT FLATS	"E" +/- .005	"F" +/- .005	"G" +/- .005	"H" +/- .015
RL9-E004	JFSW22C4	4	0.26	0.55	0.214	.428-.440	0.052	0.063	0.046	0.08
RL9-F003	JFSW22C5	5	0.32	0.63	0.273	.490-.502	0.052	0.063	0.046	0.08
RL9-G003	JFSW22C6	6	0.39	0.77	0.327	.553-.565	0.082	0.063	0.046	0.08
RL9-J006	JFSW22C7	7	0.45	0.88	0.386	.615-.627	0.082	0.063	0.059	0.10
RL9-K009	JFSW22C8	8	0.51	0.98	0.450	.740-.752	0.082	0.063	0.059	0.10
RL9-L002	JFSW22C9	9	0.57	1.08	0.496	.863-.877	0.114	0.071	0.067	0.13
RL9-M010	JFSW22C10	10	0.64	1.18	0.559	.986-1.002	0.114	0.071	0.067	0.13
RL9-N014	JFSW22C12	12	0.76	1.38	0.681	1.009-1.127	0.114	0.071	0.067	0.16
RL9-P003	JFSW22C14	14	0.89	1.59	0.795	1.297-1.315	0.142	0.080	0.076	0.16
RL9-R015	JFSW22C16	16	1.01	1.79	0.918	1.481-1.502	0.142	0.090	0.084	0.16
RL9-S007	JFSW22C18	18	1.14	2.00	1.028	1.605-1.627	0.174	0.090	0.084	0.17
RL9-T009	JFSW22C20	20	1.26	2.20	1.141	1.728-1.752	0.174	0.112	0.110	0.18
RL9-Z035	JFSW22C22	22	1.39	2.40	1.241	1.851-1.877	0.236	0.112	0.110	0.20
RL9-Z036	JFSW22C24	24	1.51	2.61	1.366	1.975-2.002	0.236	0.112	0.110	0.20
RL9-Z037	JFSW22C26	26	1.64	2.81	1.482	2.098-2.127	0.236	0.125	0.120	0.20
RL9-Z038	JFSW22C28	28	1.76	3.01	1.594	2.222-2.252	0.298	0.125	0.120	0.20
RL9-Z039	JFSW22C30	30	1.89	3.22	1.719	2.345-2.377	0.298	0.125	0.120	0.20
RL9-Z040	JFSW22C32	32	2.01	3.42	1.844	2.595-2.627	0.298	0.125	0.120	0.20
RL9-Z041	JFSW22C34	34	2.14	3.62	1.960	2.719-2.752	0.298	0.125	0.120	0.23
RL9-Z042	JFSW22C36	36	2.26	3.83	2.085	2.843-2.877	0.298	0.125	0.120	0.23

<p>Saint Technologies, Inc. 10 North Locust P.O. Box 66 Shannon, IL 61078</p> <p>Phone: 815.864.3035 Fax: 815.864.3134 CAGE 60198</p>	<p>TITLE: REALLOCK™, ROD END LOCKING WASHER SIMILAR TO NASM 14198 FOR: NAS 1423 NUTS</p> <p>TORQUE LIMIT: 100 FT. LBS.</p>	<p>CHART NUMBER</p>
		<p>2018</p>
		<p>Rev. E 05/04/2005 ECO S0043</p>

THIS DRAWING AND INFORMATION HEREIN IS THE EXCLUSIVE PROPERTY OF SAINT TECHNOLOGIES, INC. AND UNAUTHORIZED USE OR REPRODUCTION THEREOF IS PROHIBITED.